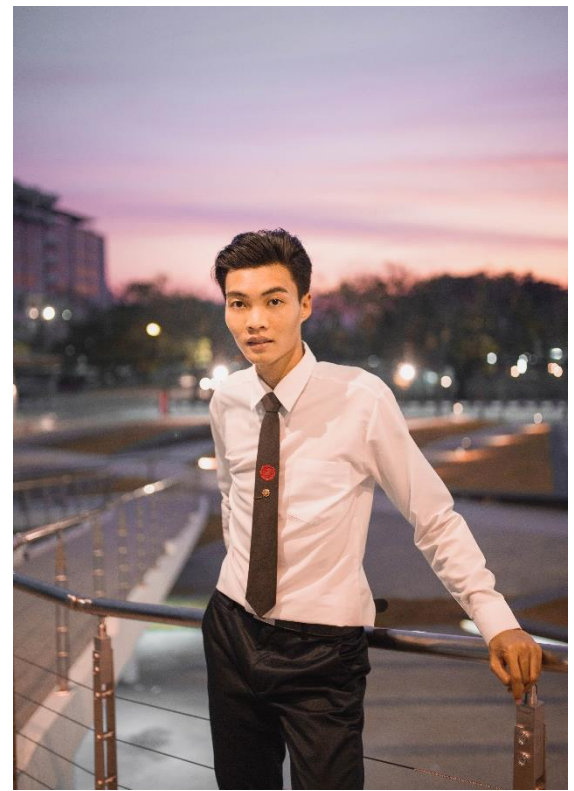


# SUPHACHAI PANYABANJONG

*Civil Engineer*



## EXPERIENCE

*Full-time*     **2018 to  
2020**

Italian-Thai Development Pub Co., Ltd  
Business Unit: Mass Rapid Transit  
Project: MRT orange line

- Educate construction contract such as outline construction specifications, try to understand technical drawing and make decisions to choose materials or solution to be used for the work.
- Plan and operate (organize manpower, instrument and equipment appropriately) the work to be done efficiently within the specified period.
- Coordinate with subcontractor or variety of professional person in order to be able to operate successfully.
- Resolve impromptu problem and technical issue in a very logical way.
- Supply and manage all materials and equipment in the warehouse for enough and suitable in each activity.
- Ensure the accuracy of technical document or various calculations.

*Internship*     **2017**

Italian-Thai Development Pub Co., Ltd  
Business Unit: Railway  
Project Description: This project was repaired and develop from container yard to shipping port.

- Gather data involve manpower, operation time etc. for predict possibility in order to done activity timelines, ensure deadlines are meet.
- Apply Microsoft Excel for a tidal chart of Chao Phraya river to help staff make decisions involve work planning.
- Design reinforced concrete precast slab for instead steel formwork which decrease over-all operation time.
- Summarize a material quantity, to list a bill of quantity for bidding a new project.

*Part-time*     **2016**

Marketing Research, Family Amusement Co., Ltd

- Conduct marketing research gather the information by create the questionnaire, SWOT analysis, plan marketing strategy in two branches, which is Fun Planet at Central Rama 9 and Warp Zone by Fun Festa at The Emporium

Tel            +668 0384 3373  
E-mail        *Panyabanjong.s@gmail.com*  
Location     *Samut Prakan, 10540,  
Thailand*

## EDUCATION

Bachelor of Engineer:                     **2018**  
Civil engineering

Department of Civil and Environmental  
Engineering, Faculty of Engineering,  
Srinakharinwirot University

## TRAINING & CERTIFICATION

License for Professional Practice  
(Associate Civil Engineer)  
Safety Officer Supervisory level  
Certificate of Crane Training Course  
Certificate of Working in Confined Space

## SKILLS

Construction Management  
Structural Analysis  
Apperception in Structural Design  
Microsoft Office Suite  
(*Upper intermediate level for MS Excel*)  
Adobe Creative Suite  
(*intermediate level for LR, PS*)  
Familiar with Calculation Tools  
(*manual and applied program*)  
Strong Numerical and Analytical Skills